

# [ ] ArcGIS Guide: Excel XY Shape

Author: Candy

Date:2012/8/15

E-mail: @www.esri.com

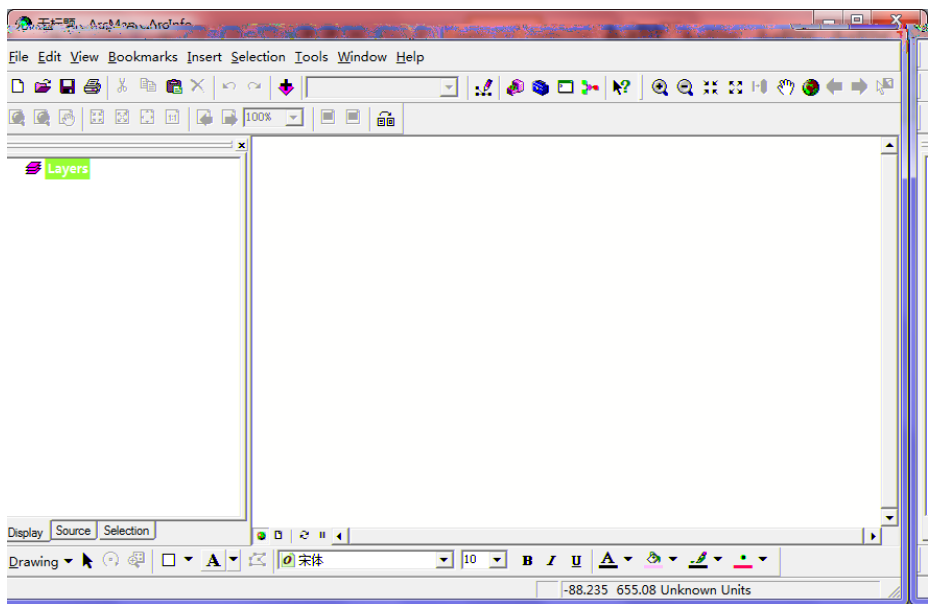
Where: [www.esri.com](http://www.esri.com);

## 1 Excel-XY

	A	B	C
1	NAME	X	Y
2	5001	41.734597	46.889326
3	5002	64.174996	73.675266
4			
5			
6			
7			
8			
9			
10			
11			
12			
13			
14			
15			
16			
17			
18			
19			
20			
21			
22			
23			
24			
25			
26			
27			
28			
29			
30			
31			
32			
33			
34			
35			
36			
37			
38			
39			
40			
41			
42			
43			
44			
45			
46			
47			
48			
49			
50			

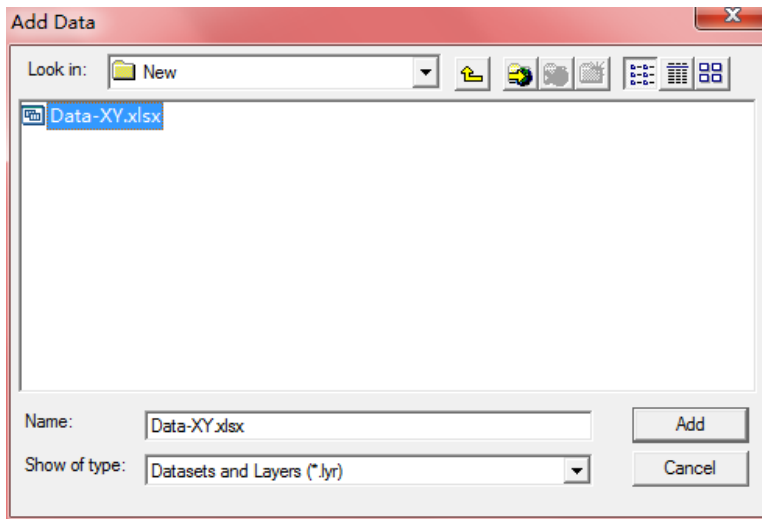
### 1 Excel-XY

## 2 ArcGIS-ArcInfo 9.3-GIS

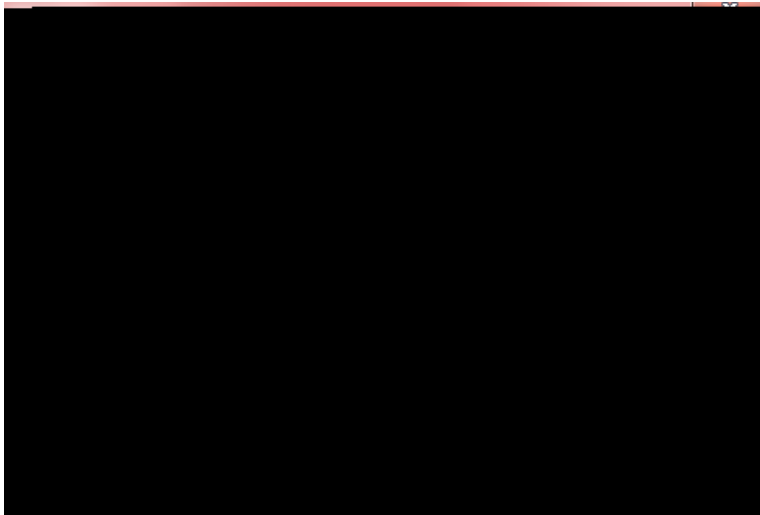


### 2 ArcMap-ArcInfo9.3

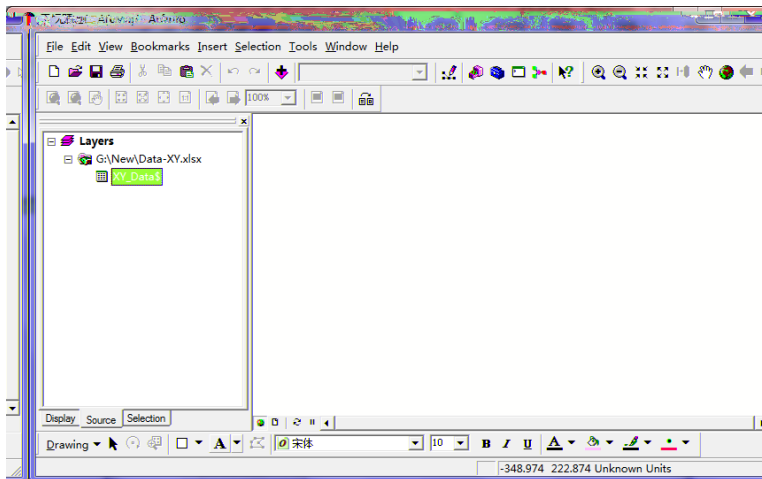
3 Excel (Lat,Lon) Shape (point)  
1 ArcGIS Data-XY.xlsx Add  
ArcGIS



3 Excel



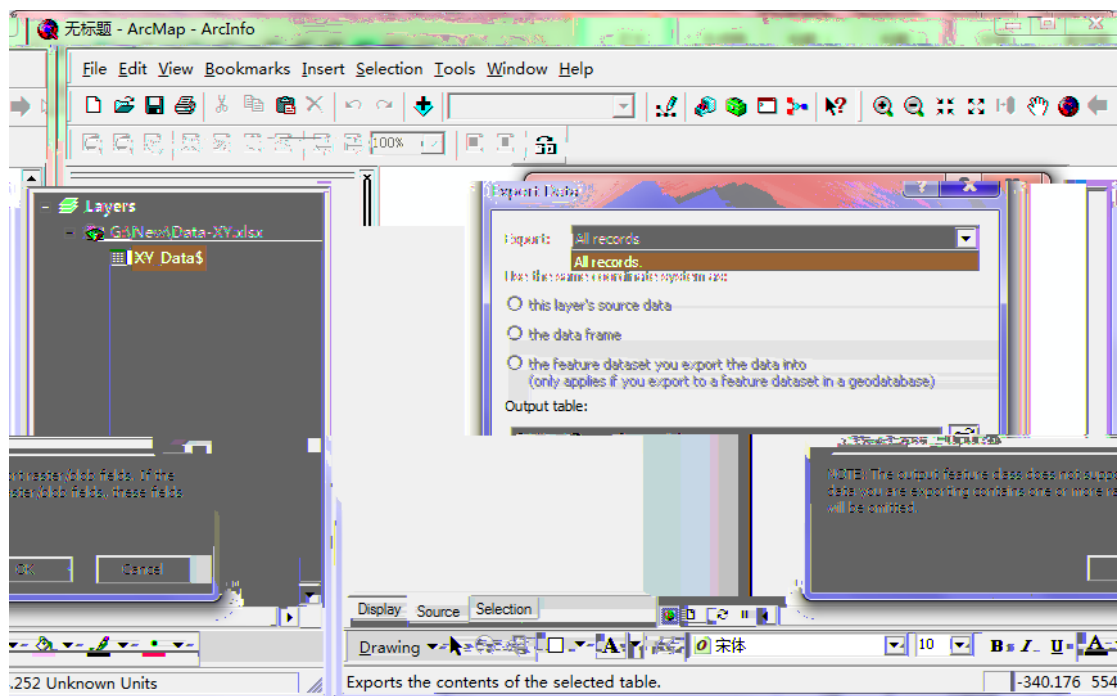
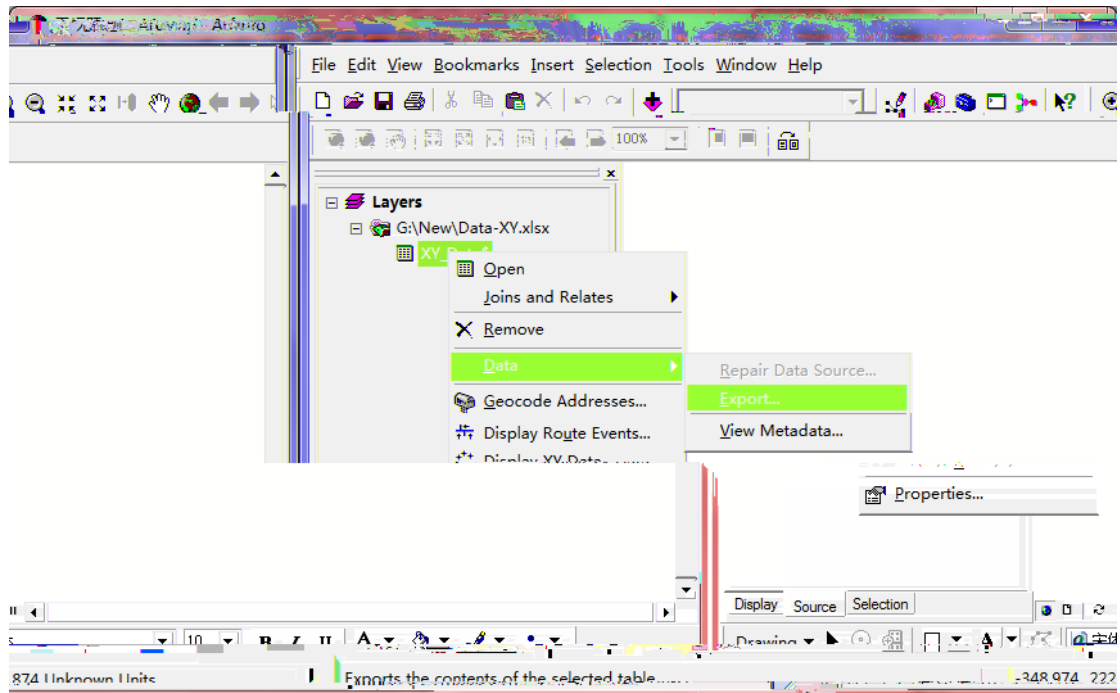
4 Excel XY\_Data\$  
Add ArcGIS



## 2 Layers

## Data - Export

Excel \*.dbf



OK \*.dbf

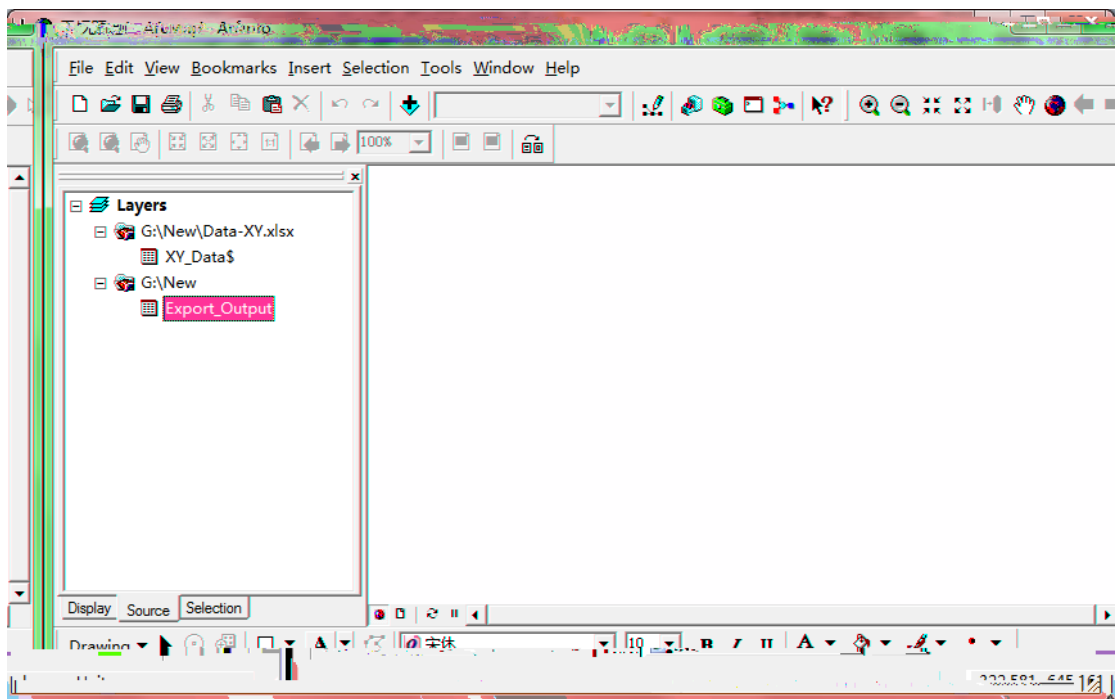
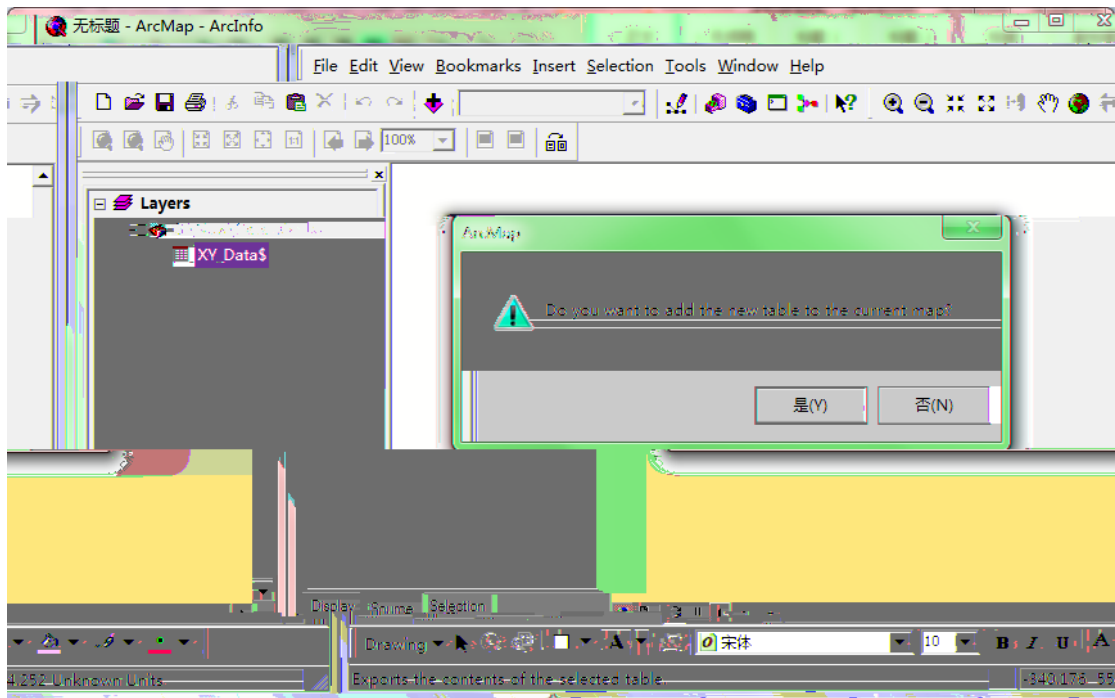
Data-XY	2012/8/15 13:55	Microsoft Office...	13 KB
Export_Output.dbf	2012/8/15 14:01	DBF 文件	3 KB

ArcGIS

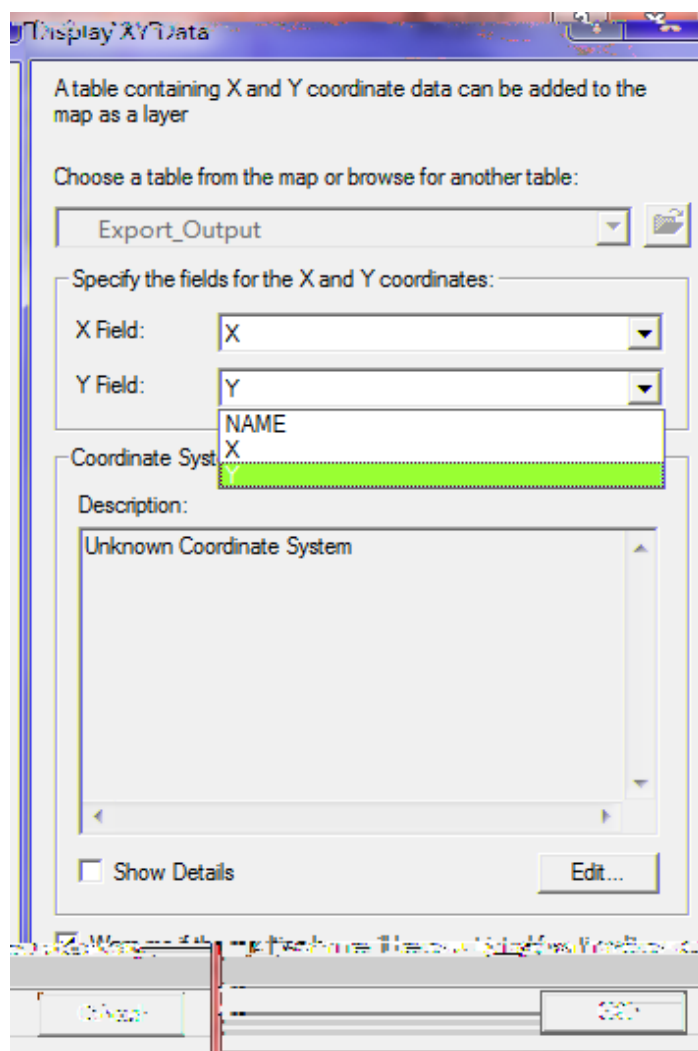
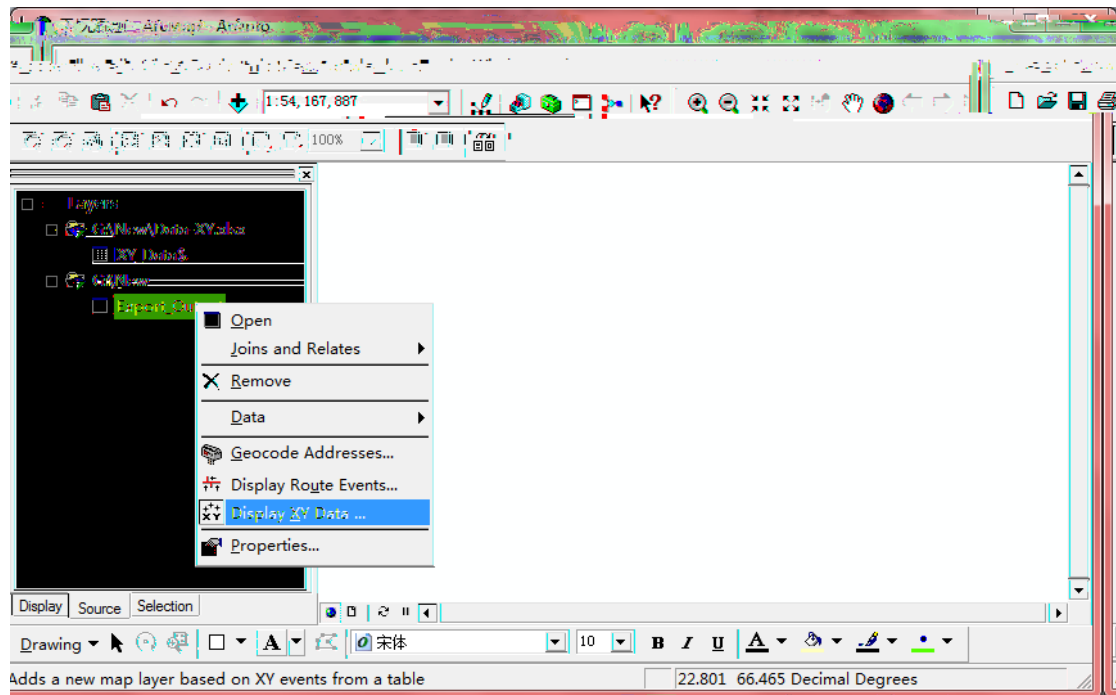
Export\_Output.dbf

ArcGIS

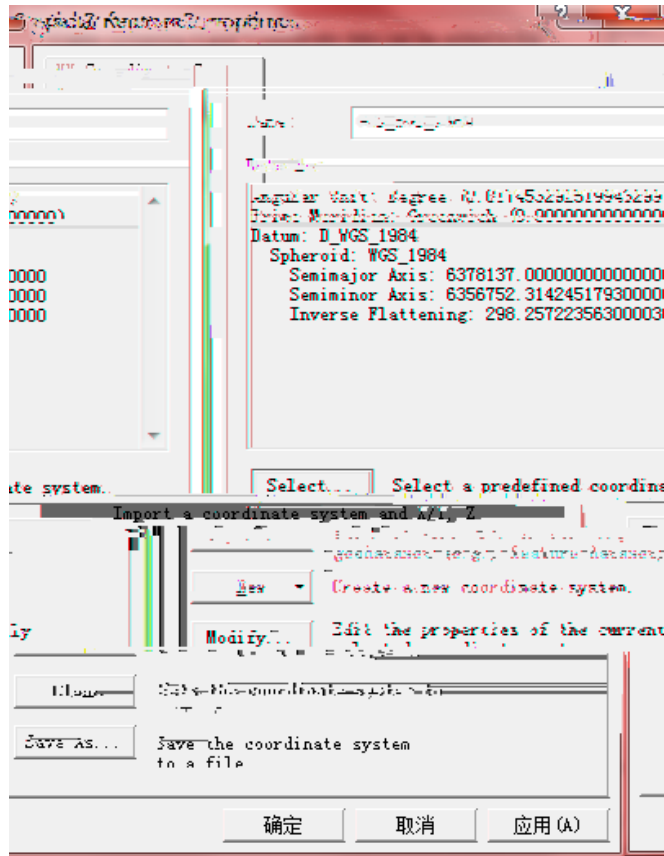
yes



3 \*dbf ArcGIS Shape  
Layers \*dbf Display XY Data XY  
OK  
Layers Data Export shape



( shape )



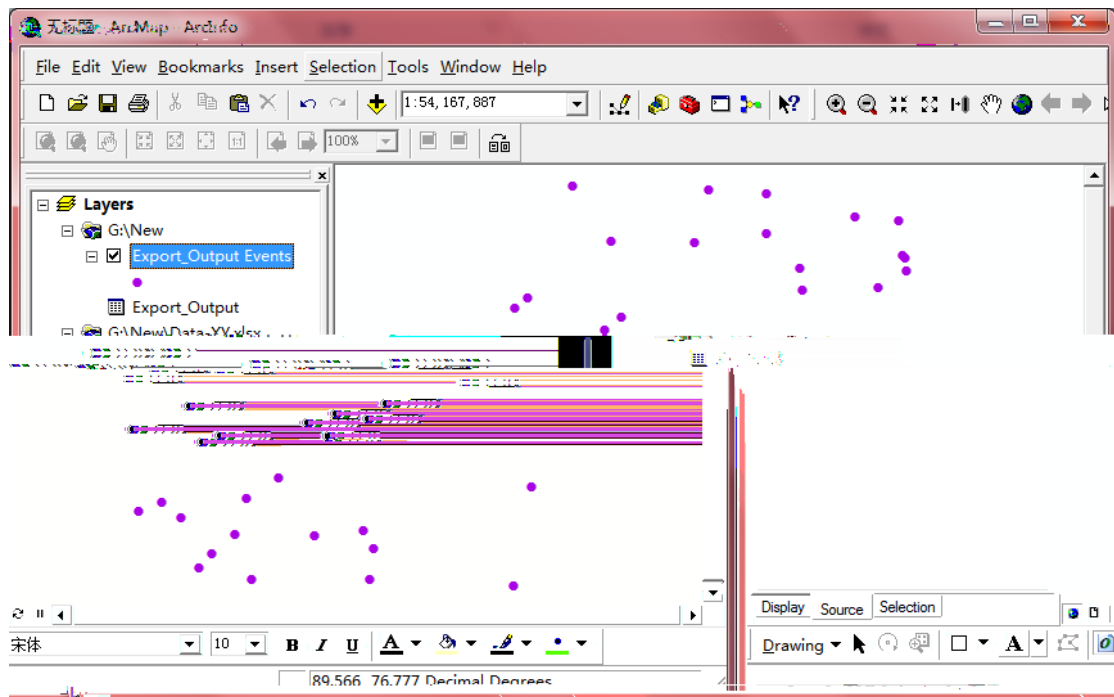
Select

Import

OK

World - WGS 1984

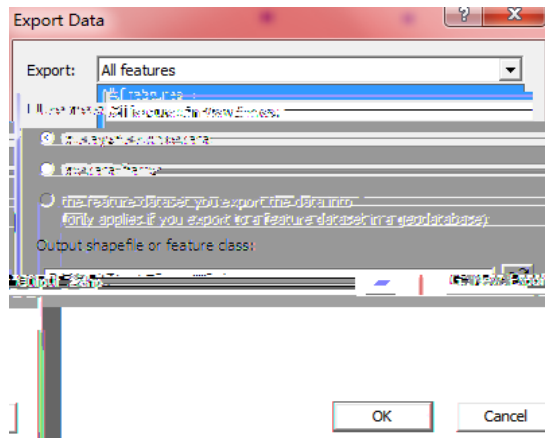
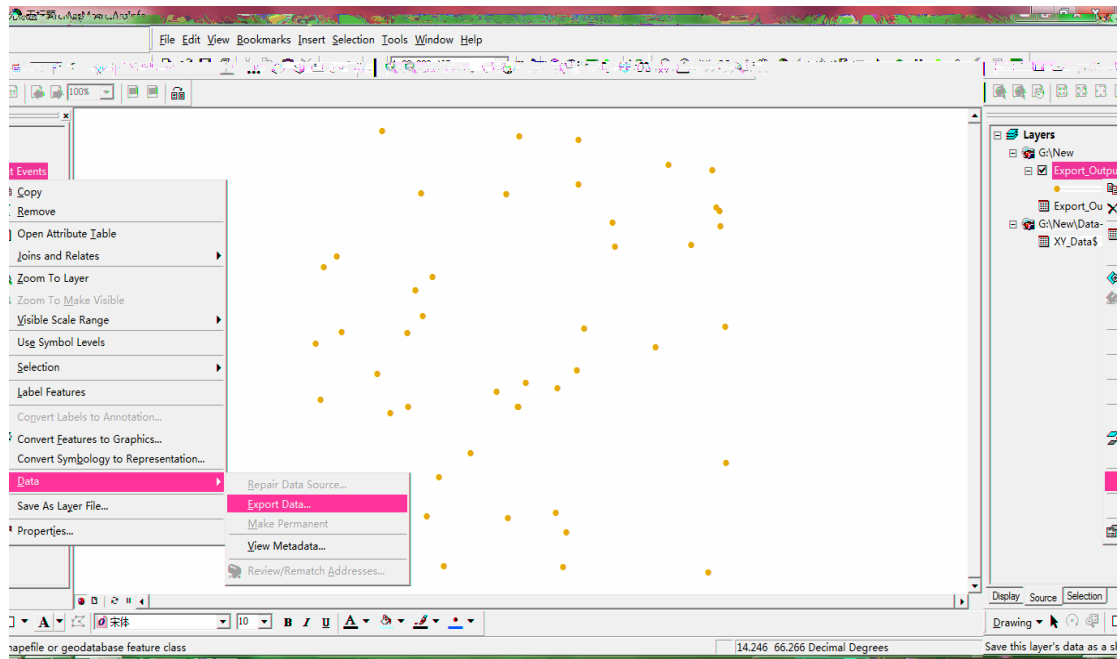
Shape ( \*.prj )



ArcGIS

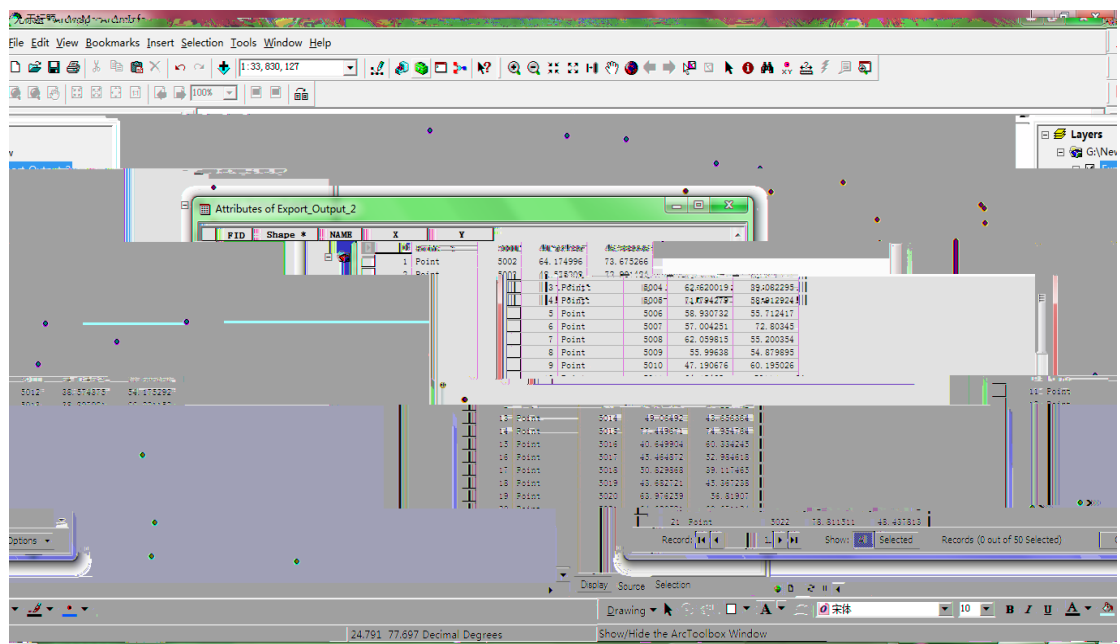
XY

Export\_Output Events



OK

Shape



[ ] ArcGIS Guide: \_\_\_\_\_ shp

Author: Candy

Date:2012/8/20

E-mail: @www.esri.com

Where: [www.esri.com](http://www.esri.com);

**1**

- (1) ArcToolbox\Data Management tools\Features\ Feature Vertices to points
- (2) feature vertices to points input features output feature class  
point type(optional) all;
- (3) ok

**2**

- (1) ArcToolbox\Data Management tools\Features\ Add xy coordinates
- (2) Add xy coordinates input features ;
- (3) ok.
- (4) ArcMap ==>open attribute table==> ctrl  
==> option  
export export save as type text file  
txt c:\aa.txt ==>ok  
txt dbf excel  
Calculate Geometry  
optional==>add field , ==>Calculate Geometry  
Calculate Geometry XY  
Coordinate System :  
use coordinate system of the data source  
UTM ;  
data frame WGS84  
data  
frame

ArcToolbox\samples\data management\features\write features to text file  
add xy coordinate text

ArcToolbox\conversion tools\from raster\raster to point

ArcToolbox\spatial analyst tools\extraction\ extract values to points  
sample